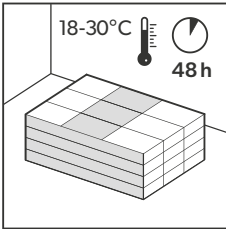


Installation instructions for Quick-Step Hybrid Vinyl Herringbone.

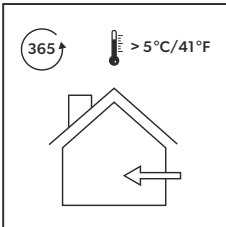
This installation instruction is applicable for Quick-Step Hybrid Vinyl Herringbone collections with integrated underlay.

Golden rules



1

Install your floor between 18 and 30°C and a subfloor temperature of above 15°C. Quick-Step Hybrid Vinyl Herringbone must be acclimatized in the room of installation between 18-30°C (64-86°F) for a period of at least 48 hours before installation. This floor & room temperature needs to be maintained prior to, during and for at least 24 hours after the installation is completed.



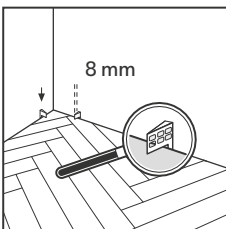
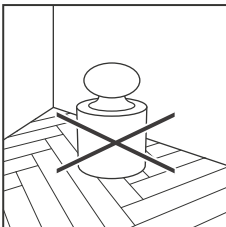
2

Quick-Step Hybrid Vinyl Herringbone has been designed for indoor heated (> 5°C) (41°F) installations, preferably at normal room temperature. Quick-Step Hybrid Vinyl Herringbone cannot be installed in solariums, seasonal porches, camping trailers, boats and other unheated applications.

Heavy objects (for example a heavy wood stove, electrical accumulators, build-in cabinets and other fixed objects ...) should not be installed on top of the Quick-Step Hybrid Vinyl Herringbone floor. It is recommended to install the stove/accumulator first on top of a protection plate, and install the Quick-Step Hybrid Vinyl Herringbone around up to the plate and respect the expansion gaps.

For other critical situations with high local temperatures it is recommended to use Quick-Step glue down vinyl.

If you have any concerns about the temperature of your floor, please contact the Quick-Step technical department.



3

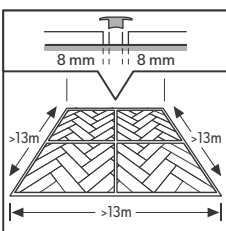
Make sure that you leave an expansion gap of 8 mm.

Never block the floor.

If heavy/fixed objects (ex. kitchen, kitchen island, build-in cabinets, heavy stoves) are on the floor they act as a wall, so the minimum expansion should be foreseen there.

Floating installation should stay floating!

If this is not possible, use our Quick-Step glue down vinyl.



4

In most cases you don't need an expansion profile between different rooms.

However, the use of an expansion profile is mandatory when:

- a. the temperature in adjacent rooms will vary differently above and below the T-range of 18-30°C.
- b. you have rooms with and without floorheating/-cooling.
- c. the maximum room size is exceeded.

For standard residential use (15-35°C), the maximum room size is 13mx13m.

For rooms with more extreme temperatures (5-65°C), the maximum room size is 8mx8m.

For rooms with HVAC-system (18-25°C), the maximum room size is 30mx30m.

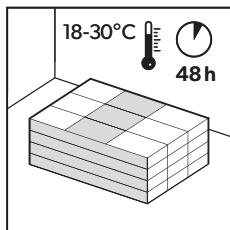
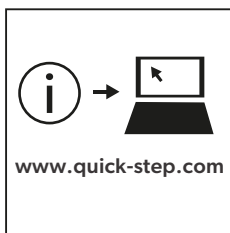
Larger rooms require additional expansion gaps and expansion profiles.

IN ORDER TO OBTAIN A GOOD RESULT, WE ADVISE ALL PARTIES TO FOLLOW ALL GIVEN INSTRUCTIONS CAREFULLY.

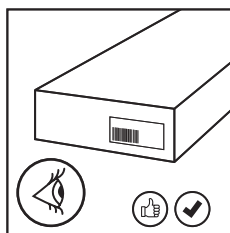
Please make sure that the floor user has a copy of this document.
National regulations regarding floor application must always be followed.

- Site and installation conditions must always comply with the relevant national regulations and installation standards.
- In case the national standards or regulation conflicts with the manufacturer's recommendations, the most stringent of the two prevails.

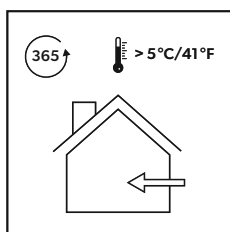
1. Preparation



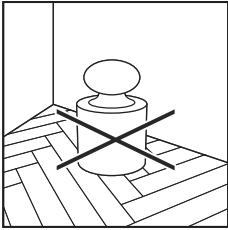
1 Always store and transport Quick-Step Hybrid Vinyl Herringbone floors carefully to prevent distortions. Store and transport the boxes on a flat surface in neat stacks. Never store the boxes upright or in moist or in dusty rooms. Do not store the boxes in very cold (< 5°C) or very warm (> 35°C) or in humid places. Quick-Step Hybrid Vinyl Herringbone floors must be acclimatized in the room of installation between 18-30°C (64-86°F) for a period of at least 48 hours before installation. This floor- & roomtemperature needs to be maintained prior to, during and for at least 24 hours after the installation is completed. Install your floor between 18 and 30°C and a subfloor temperature of above 15°C.



2 Quick-Step Vinyl floors can be bought in different formats, decors and qualities. Make sure you have received the correct flooring that you ordered before starting the installation. It is always a good idea to store the end labels together with your purchasing receipt.



3 Quick-Step Hybrid Vinyl Herringbone has been designed for indoor heated (> 5°C) (41°F) installations, preferably at normal room temperature (= 18-30°C). Quick-Step Hybrid Vinyl Herringbone cannot be installed in solariums, seasonal porches, camping trailers, boats or any other unheated application.



4

Never block the floor.

If heavy/fixed objects (ex. kitchen, kitchen island, build-in cabinets, heavy stoves, electrical accumulators, doorframes, stairs and others) are on the floor, they act as a wall.

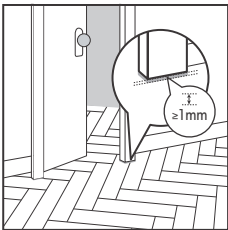
- Heavy objects should be installed first and not placed on top of the Quick-Step Hybrid Vinyl Herringbone floor.
- For heavy objects with radiant heat, it is recommended to install the stove/accumulator first on top of a protection plate, and install the Quick-Step Hybrid Vinyl Herringbone around the plate and respect the expansion gaps.

The Quick-Step Hybrid Vinyl Herringbone floor must be able to move around the heavy objects to avoid open joints and separating planks. The expansion gaps size must be respected around all heavy/fixed objects.

A floating installation should ALWAYS stay floating!

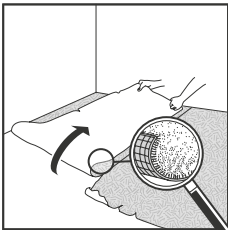
Quick-Step Hybrid Vinyl Herringbone is a floating floor and should never be adhered to the subfloor.

If this is not possible, use our Quick-Step glue down vinyl.



5

If the doorframe is installed after the floor installation, please make sure that a min. 1mm vertical gap is left between the base of the doorframe and the surface of the floor.

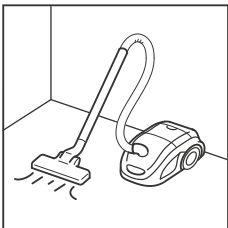


6

The type of subfloor, its quality and its preparation has a big influence on the final installation result. If the subfloor is not appropriate for the installation of Quick-Step Hybrid Vinyl Herringbone then necessary actions should be taken. Contact your Quick-Step Vinyl dealer, who will be more than happy to help you. Be aware that unevenness in the subfloor may leave marks and can create gaps in your Quick-Step Hybrid Vinyl Herringbone floor. The subfloor should be stable and firmly fixed.

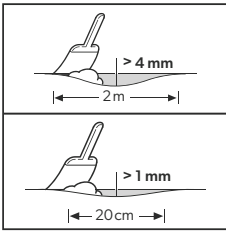
Furthermore it cannot be soft, damaged or loose laid.

Remove existing and /or too soft floorcoverings like carpet, needle felt, cushion vinyl. Floating floor coverings need also to be removed.



7

Make sure that the subfloor is dry, flat, stable, clean and free from grease and chemical substances. If needed, scrape off and clean up old adhesives. Prior to installation, carefully remove all debris (including nails), sweep and vacuum. Repair major surface imperfections and large cracks. It is recommended to remove old skirtings and to install new ones after the installation of the floor.



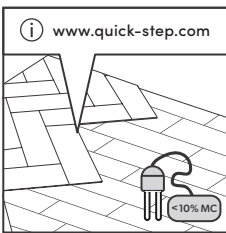
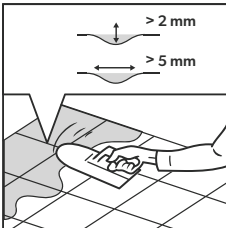
8

Cement joints between tiles or other gaps of more than 2mm (0,08inch) in depth and 5mm (0,2inch) in width should be levelled.

For Quick-Step Hybrid Vinyl Herringbone click floors: any unevenness of more than 1mm (0,04inch) over a length of 20cm (7,87inch) must be levelled out. The same applies to unevenness of more than 4mm (0,16inch) over a length of 2m (78,7inch).

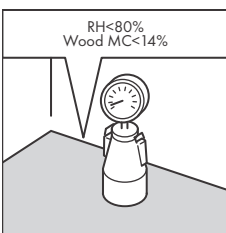
Bumps should be removed by sanding or scraping.

If an appropriate levelling compound is required, check if a primer or sealer is needed.



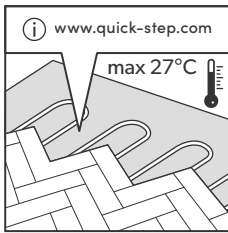
9

In case of installation on a wooden subfloor, please remove any existing floor covering first. No signs of mold and/or insect infestations should be present. If there is moist in the woodbased subfloor or there is no proper moisture barrier below the woodbased subfloor it has to be removed first. Reason is that the wood will rot after time because the moist is blocked by the new flooring and its underlay. Make sure the subfloor is level and nail or screw down any loose parts. Apply a suitable wooden floor panel, level floor, or use levelling compound on top for a perfect subfloor preparation. The levelling boards must be fixed with an appropriate glue or every 30cm with screws. An eventual crawl space under the plank floor must be sufficiently ventilated. In case there is no crawl space, make sure that the moisture content of all the floor layers (wooden subfloor + subfloor (for ex. cement screed, anhydrite or ...)) are lower then the mentioned values. Remove any obstacles and make sure there is sufficient ventilation (minimum 4 cm² total ventilation openings per m² of floor).



10

The moisture content of any concrete sub-floor must be less than 80%rh when tested in accordance with AS1884-2021. If you do not have the ability to accurately test the moisture content, or if the content is above 80%rh, a continuous damp proof should be installed. The easiest way to install this damp-proof is by the installation of a PE plastic film of 150um thickness or greater. Joints should be overlapped 300mm and taped. Other types of 'coat on' damp proofs can be used, as long as they are compatible with the moisture content of your sub-floor. Wood sub-floors must be below 14%MC, otherwise a separate damp-proof should again be installed. Failure to follow the procedure regarding sub-floor moisture, can lead to a floor failure.



11

Separate rooms / zones with and without floor heating, and/or with different temperature controllers / temperature behavior, must be installed with a transition -profile with respect of the expansion gaps of 8mm on each side.

Additional instructions apply if there is underfloor heating or cooling. For health and safety reasons and to avoid problems with the Quick-Step Floor, certain important basic rules need to be followed:

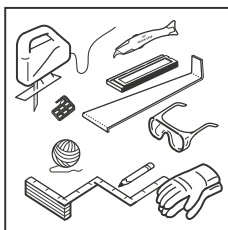
Floor Heating

- Firstly it is very important to ensure a floor surface temperature of maximum 27°C (80°F).
- Always change the temperature gradually at the start and end of a heating period.
- Finally try to avoid heat accumulation by carpets or rugs or by leaving insufficient space between furniture and the floor.
- Some water based and electrical floor heating systems are permitted. See separate installation instruction Floor Heating and Floor Cooling.

Floor Cooling

- For floor cooling, a heat-resistance of < 0,15 m²K/W is prescribed.
- Ensure a proper safety system including automatic sensors that detect when the dew point (= start of condensation) is reached below or in the floorcoverings and then switch off the cooling.

For a good preparation, read also the separate installation instructions for Floor Heating and Floor Cooling on www.quick-step.com

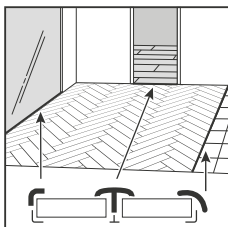


12

Because Quick-Step Hybrid Vinyl Herringbone comes with an integrated underlay already, a separate underlay is not allowed before installing the Quick-Step Hybrid Vinyl Herringbone.

The following standard tools are needed: hammer, saw with blades for plastic (a jig-saw, hand circular saw, hand saw, or cross-cut saw), mouth mask (during sawing), measurer, safety glasses, thin rope, gloves and a pencil. Besides that, you also need the following accessories: Quick-Step INSTALLATION SET (a pull-bar, spacers and a tapping block suitable for the Quick-Step click system) and suitable maintenance products.

The use of accessories other than Quick-Step Vinyl accessories may cause damage to your Quick-Step Hybrid Vinyl Herringbone floor. In such cases the guarantee provided by Quick-Step will be void. For this reason we advise to use only Quick-Step Hybrid Vinyl Herringbone accessories, which have been specially designed and tested for use with your Quick-Step Hybrid Vinyl Herringbone floor.



13

Choose the correct profile to cover the expansion gaps depending on the situation.

In most cases you don't need an expansion profile between different rooms.

However, the use of an expansion profile is mandatory when:

- a. the temperature in adjacent rooms will vary differently above and below the T-range of 18-30°.
- b. you have rooms with and without floorheating/cool.
- c. the maximum room size is exceeded.

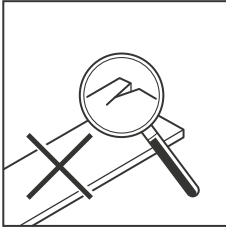
For standard residential use (15-35°C), the maximum room size is 13mx13m.

For rooms with more extreme temperatures (5-65°C), the maximum room size is 8mx8m.

For rooms with HVAC-system (18-25°C), the maximum room size is 30mx30m.

A subfloor control joint can be covered with Quick-Step Hybrid Vinyl Herringbone flooring. Please check the subfloor flatness requirements.

Building movement joints must be transposed to the Quick-Step Hybrid Vinyl Herringbone floor and a profile must be used.

**14**

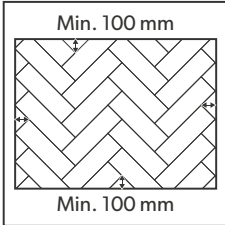
Check all panels before and during installation in optimal daylight conditions under the angle of light reflection. Check that the colours correspond to those ordered, the quantities are correct and no visible damage to the boxes. Check Quick-Step Hybrid Vinyl Herringbone during installation for any visible defects. Do not install any panels that display any imperfections.

Be aware that some designs have a natural variation within them.

Defective panels must never be used.

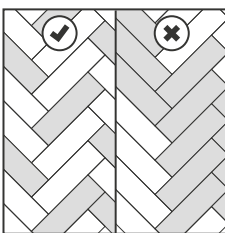
An installed plank is considered as accepted and cannot be claimed.

2. Installation



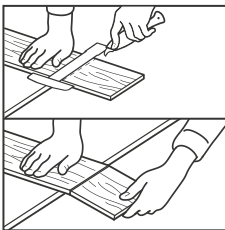
1

Before starting carefully measure the length and the width of the room to plan a precise lay-out to achieve a balanced appearance of the floor. This will ensure also you won't end up with the last row being too narrow. We advise to make sure that the smallest pieces are always wider than 100 mm. To assure this, you can slide the middle line of the floor.



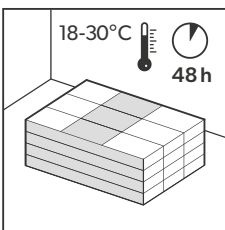
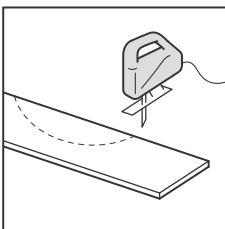
2

During installation, make sure that you mix the floor panels (and floor boxes) sufficiently so that there are not too many identical, lighter or darker planks next to each other.



3

To shorten the length of the plank with a straight cut, you can cut the Quick-Step Hybrid Vinyl Herringbone floors with the decor side face up, using a special concave vinyl cutting knife. In order to cut the vinyl plank, draw a straight line along which you will be cutting, and use the knife to make a firm cut in the surface. You never need to completely cut through the vinyl. (TIP: the attached underlay should be cut too before you snap the plank.) Then break off the plank using both hands. For any other cuts, you need to saw the planks. Depending on the type of saw, position your plank with the decor side face-up or face-down. Before making the actual cut, use a leftover piece to determine how the cleanest cut can be obtained (decor side face-up or face-down).



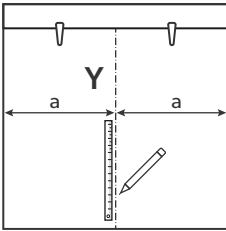
4

Installations in areas colder than recommended, will influence the installation properties of Quick-Step Hybrid Vinyl Herringbone. The planks will be less flexible, cutting will be harder and small pieces difficult to cut out. The lower the temperature, the more difficult the installation and the higher the risk of damaging the click profile. Also, the risk of excessive expansion increases with decreasing installation temperature. Installation in areas warmer than recommended, increases the risk of excessive shrinkage/gaps between panels.

Quick-Step Hybrid Vinyl Herringbone flooring has a patented locking system and is intended as a floating floor; panels should not be bonded to the subfloor, but in addition to that, it is not allowed to glue the joints between the planks.

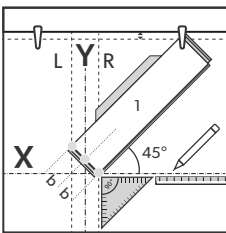
Only for a plank replacement, it is allowed to glue the joints between the planks locally.

As opposed to many other herringbone click planks, the Quick-Step Hybrid Vinyl Herringbone planks do not come in "A" and "B" planks, but in a universal plank equipped with the patented Unizip profile. No need to sort the planks out and to make separate piles.



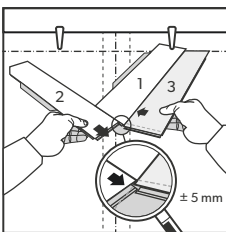
5

A herringbone design should typically be started from a central axis. Use a chalk line or straight edge to mark the centre of your room, creating the 'Y' line.



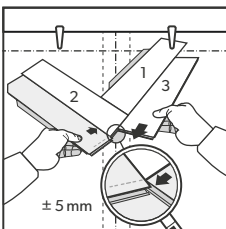
6

Place your first plank (1) at an angle of 45°. Draw parallel to the "Y" line, extra "L" and "R" lines to mark the corners. Also draw an extra reference line "X" as shown in the diagram.



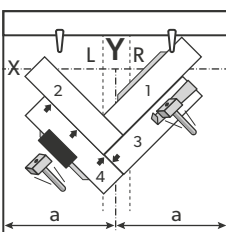
7

Place your first plank (1). Use another plank (3) and attach it to the first by inserting it into the groove at an angle of +20°. Do not fold it down. Use plank (3) as a guide to install plank (2). Let plank (3) extend past plank (1) with ± 5mm at the bottom. Now insert plank (2) into the short side of plank (1) and slide it till it is stopped by plank (3). Now fold down plank (2).



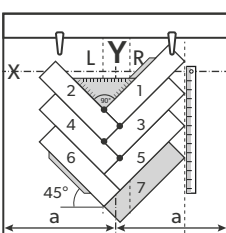
8

Now repeat the same method with plank (3) and (4). Plank (4) now serves as a stopper for plank (3). Fold down plank (3). Continue this process until you finish the center rows.



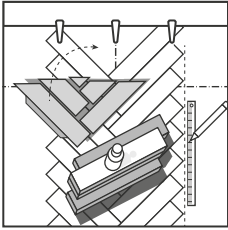
9

Make sure that the joint is closed tightly. Use hammer and tapping block to gently tap and ensure the locking mechanism is correctly engaged.



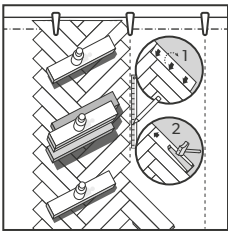
10

Work your way down. Do not forget to tap gently to perfectly engage the joint. Use a straight edge or additional reference line to ensure that the rows remain straight! Repeat this line with new rows.



11

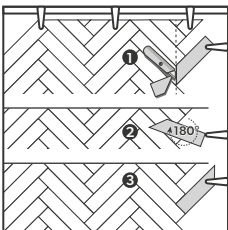
Having placed multiple planks in the centre row. Fill the open triangle close to the wall. Use the spacers to maintain the correct expansion gap between the wall and the floor. It is recommended to place some unopened boxes (or other type of weight) to keep the already installed section in place.



12

Now work your way up the pattern as shown.

- a. Connect the long end first by lifting at +/-20°.
- b. Now gently tap the short end of the plank with a tapping block and a hammer.
- c. Both ends are closed now. However it's wise to check, just to be sure, that during the manipulation no small gaps have formed.



13

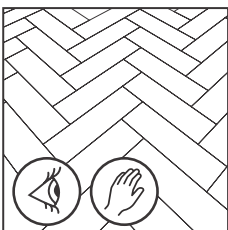
Place your planks in the last row in the position as you were to continue a normal row. Now turn one plank 180° and place the corner against the wall minus the distance of the spacer. You now can draw the cutting line and cut off the surplus.

Turn back the plank 180° and install it. Repeat this with each individual plank.

Once finished, remove the spacers. Your floor can now expand and contract freely.

Tips:

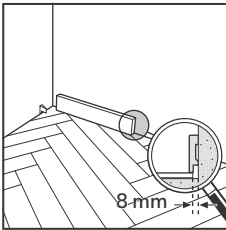
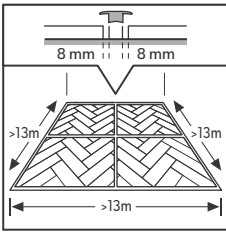
- It is advisable to sit with your knees or stand with your feet on the already installed panels, to ensure that they don't start shifting during further installation.
- In order to make the start of the installation easier, assemble the first 10 planks away from the wall, so you can sit on the planks during the assembly. Then slide the first 10 planks at the wanted position close to the wall with distance spacers in place. Take a thin rope and hold it alongside the installed planks to check and adjust the straightness of your installed first rows. It is recommended to make additional checks of the straightness, in order to confirm the straightness during the installation. Remember to use the distance spacers for the expansion gap of 8mm (0,315 inch) along the perimeter.



14

After the installation of each plank and before continuing with the next plank, check each short and long side joint to make sure there are no height differences and no openings.

Continue the installation like this - row by row - towards the end of the room. The easiest way to work is to sit on the already installed planks.



15

Room temperature varies continuously, so it is vital that the floor is able to expand and contract. For this reason, make sure you leave an expansion gap of 8 mm (5/16") on all sides of the floor, around pipes, thresholds and under door frames. Expansion gaps can be finished by means of a skirting that is attached to the walls or with an expansion profile.

In most cases you don't need an expansion profile between different rooms. However, the use of an expansion profile is mandatory when:

- a. the temperature in adjacent rooms will vary differently above and below the T-range of 18-30°.
- b. you have rooms with and without floorheating/-cooling.
- c. the maximum room size is exceeded.

For standard residential use (15-35°C), the maximum room size is 13mx13m.

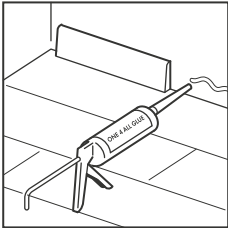
For rooms with more extreme temperatures (5-65°C), the maximum room size is 8mx8m.

For rooms with HVAC-system (18-25°C), the maximum room size is 30mx30m.

Larger rooms require additional expansion gaps and expansion profiles.

3A. Finishing

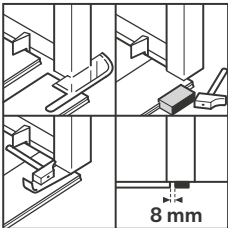
Remove all spacers.
Inspect the final surface of the installed floor.



1

Install the skirting-board against the wall. Never attach the skirting-board to the floor. This method allows the floor to expand and contract under the skirting-board.
Do not fill the expansion gaps with silicone or other kit.

If you would like to finish your floor fully waterproof, read the instructions below "3B. FINISHING OF THE FLOORING IN WET AREAS" before installing the skirtings.

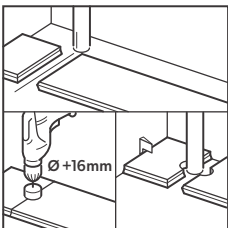


2

When the new floor meets a threshold or a doorway, we recommend undercutting the door frames or moldings. To secure the correct cut, turn a plank upside down with the underlay below, and place it on the floor up to the door frame. This ensures that the cut will be made at the correct height. Then place a multi tool or hand saw flat against the plank and simply cut through the frame. When sawing the panels make sure that the expansion gap under the door is 8mm. Remove the cut out pieces and vacuum away any debris.

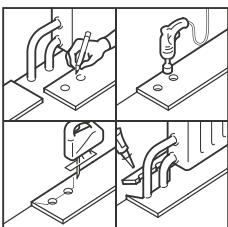
Install the plank on the long side, keeping the short side close to the undercut molding. Then slide the plank underneath the undercut towards the already installed plank in order to close the short end joint. Use the Quick-Step pull bar and/or tapping block to secure absolute tightness in the long and short joint.

If you cannot lift the panel (e.g. under radiators), use the Quick-Step pull bar and/or tapping block to tap the planks together.



3

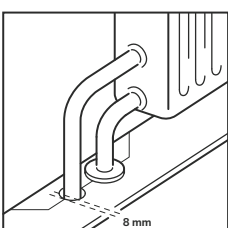
In rows where there is a pipe, make sure the pipe falls exactly in line with the short side of two planks. Take a drill bit with the same diameter as the pipe plus 16mm (0,63 inch).
Click the planks together on the short side and add a third plank on the long side for stability. Drill a hole centered on the joint between the two planks.
Now you can install the planks.



4

In rows where there is a double pipe, proceed as follows:

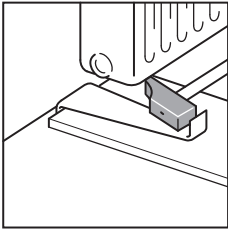
1. Measure where the pipe will come through the plank. Don't forget to allow room for the expansion gap. Measure the diameter of the pipe plus 16 mm for the expansion.
2. Drill through the panel where the pipe will come through
3. Extend the hole to the edge of the panel
4. Lay the panel around the pipe.



5

Then, using an appropriate PVC glue along the cut edges of the piece you cut out, glue the piece in place. Be sure no glue comes between the cut out piece and the subfloor.

For a perfect finish around pipes, use Quick-Step pipe covers (floating placement).

**6**

In places where it is difficult to install the planks with the tapping block (e.g. underneath radiators), you can tap them together with the pulling iron and a hammer.

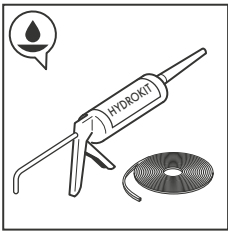
3B. Finishing of the flooring in wet areas

This installation instruction can prevent water infiltration around the perimeter and obstacles of your Quick-Step Hybrid Vinyl Herringbone. Following these instructions carefully ensures the water-resistant floor will perform in most applications / room settings. These instructions will help to seal the perimeter of the floor preventing water infiltration into the vinyl core in high-risk areas - i.e. areas with risk of liquid spillages on the surface, direct access to outside, etc.

The floor is not suitable for use in *damp spaces* i.e. within shower enclosures, pool areas, saunas, and rooms with built-in drainage.

Please note that some national regulations do not allow floating installation in wet rooms, such regulations regarding floor applications must always be followed.

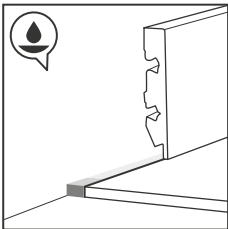
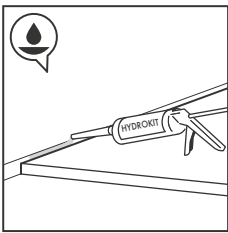
For a water resistant finishing, use the elastic waterproof transparent paste (QS HydroKit) and the foamstrip (NEVRFOAMSTRIP15).



1

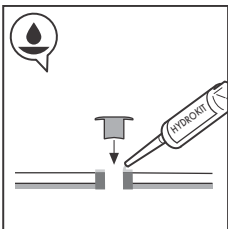
Sealing the perimeter expansion gaps combines a compressible PE foamstrip and the flexible and waterproof Quick-Step HydroKit. Place the PE foamstrip in the expansion gaps with the help of the self-adhesive backing and apply the flexible Quick-Step HydroKit under slight angle towards the Quick-Step floor. Make sure that the Quick-Step HydroKit covers about 1 to 2 mm of the wall, the whole foamstrip and 1 to 2 mm of the floor.

Tip: To make work more clean, remove any excess HydroKit immediately.



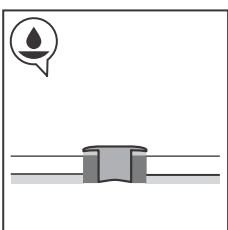
2

Install the skirting-board with Quick-Step One4all glue against the wall. When choosing the matching colored skirting or scotia, use the respective Hydrostrips to prevent water penetration and to obtain a neatly finished appearance.



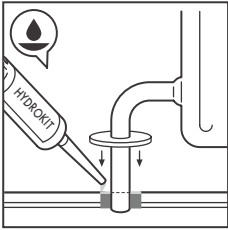
3

Fix the Incizo base profile to the subfloor with Quick-Step One4all glue. Apply the flexible HydroKit on the PE foamstrip that is in the expansion gap.



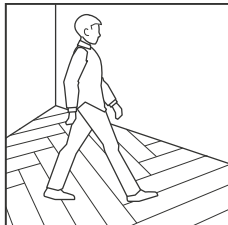
4

Push the Incizo profile in the base profile and the wet HydroKit.

**5**

For a perfect finish around pipes, use Quick-Step pipe covers and the elastic waterproof transparent Quick-Step HydroKit, taking into account the expansion of 8mm. Place the foamstrip in the expansion gaps. Apply Quick-Step Hydrokit on the foamstrip. Then place the pipe covers in a floating installation.

4. Maintenance

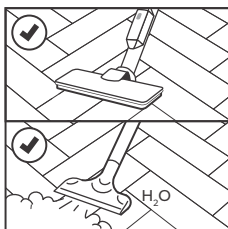


1

You can immediately walk on your new Quick-Step Hybrid Vinyl Herringbone floor after installation.

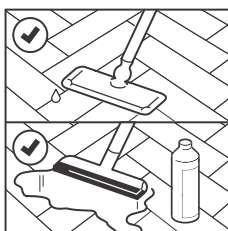
Appropriate maintenance procedures will help to preserve the appearance and will extend life of a Quick-Step Hybrid Vinyl Herringbone floor. The frequency of maintenance will depend on the amount and type of traffic, degree of soiling, the floor colour and type.

For full maintenance instructions and recommended products we refer you to www.quick-step.com.



For dry maintenance, we advise a Quick-Step mop or vacuum cleaner. Make sure the vacuum cleaner is equipped with soft wheels and a special brush to avoid scratches on your floor.

You can use a steam cleaner on the Quick-Step Hybrid Vinyl Herringbone range, if there's no steam directly coming on the Quick-Step Hybrid Vinyl Herringbone. So it must always be used with an appropriate cloth on the steam opening, which guarantees also an homogeneous heat and steam distribution. It is also important to take care to hold the apparatus not too long on the same place and clean the floor in the length direction of the planks.



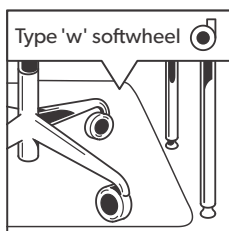
2

Your Quick-Step Hybrid Vinyl Herringbone floor can be cleaned with a damp or wet mop. Quick-Step Cleaner is a maintenance product specifically developed to keep your new vinyl floor in top condition. Never use natural soap detergents since this will leave a sticky film on the surface which will collect dust and dirt and will be difficult to remove. The same with cleaning agents containing abrasive particles, these might matt down the surface. It is always important not to overdose any cleaning agent, as this will lead to a build up of cured cleaning agent which is difficult to remove without using a vinyl stripper.

Bad maintenance can damage your floor.

For further information on how to clean and maintain your floor, please visit www.quick-step.com. For specific cleaning instructions in commercial applications or projects, you can contact the Quick-Step technical department.

Always remove spilled liquids from the floor immediately.



3

Protect furniture and chair legs. Use (office) chairs type W and seats with soft wheels that are suitable for a vinyl floor and/or use a desk mat that is suitable for Quick-Step Vinyl.



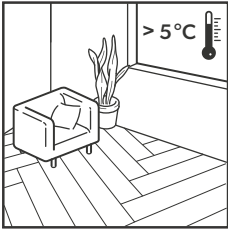
4

Never drag heavy items or furniture over the floor, but lift them up.

Make sure furniture legs have a large floor surface and are provided with non-staining floor protectors. The taller and/or wider the furniture feet are, the better the weight distribution on the floor will be, and the less chance there is to damage the floor.

Place non-rubber backed mats at all outside entrances to prevent dirt, grit and soil from being transferred onto your floor. This will reduce damages, the maintenance requirement and extend the life of your floor. Please note that prolonged contact with some rubber types and/or latex can cause a permanent stain.

Do not allow cigarettes, matches or other very hot items to contact the floor as this may cause permanent damage.

**5**

Ensure that the indoor climate conditions are always kept $> 5^{\circ}\text{C}$ (41°F) and preferably between $18\text{-}30^{\circ}\text{C}$ ($64\text{-}86^{\circ}\text{F}$). It is also important to keep the subfloor in the temperature range mentioned above.