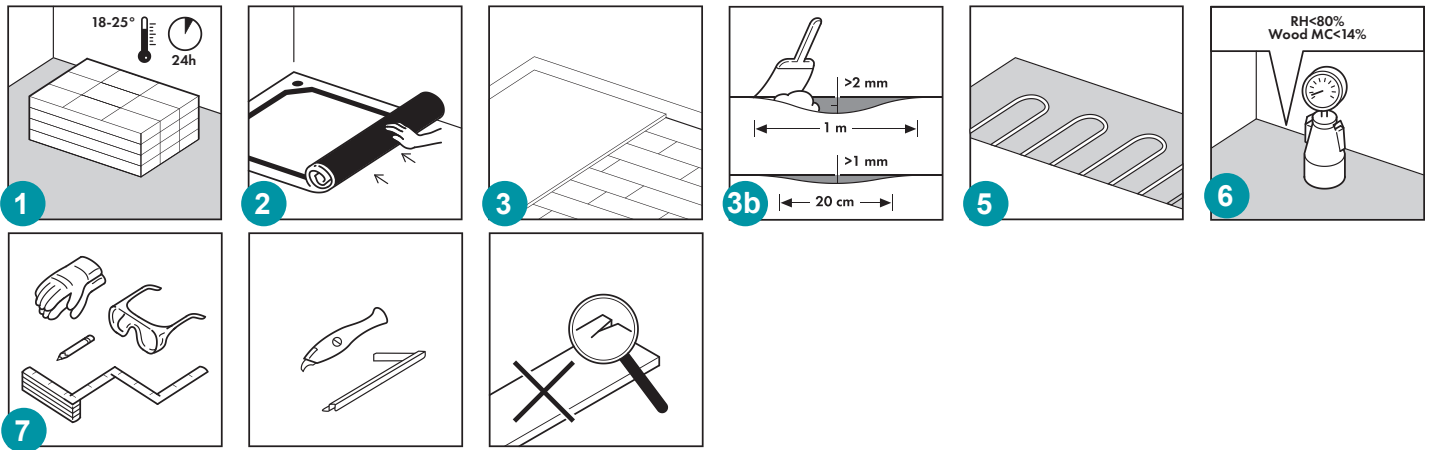


INSTALLATION INSTRUCTIONS FOR HYBRID FLOORING. IN ORDER TO OBTAIN A GOOD RESULT, WE ADVISE TO FOLLOW ALL GIVEN INSTRUCTIONS CAREFULLY.

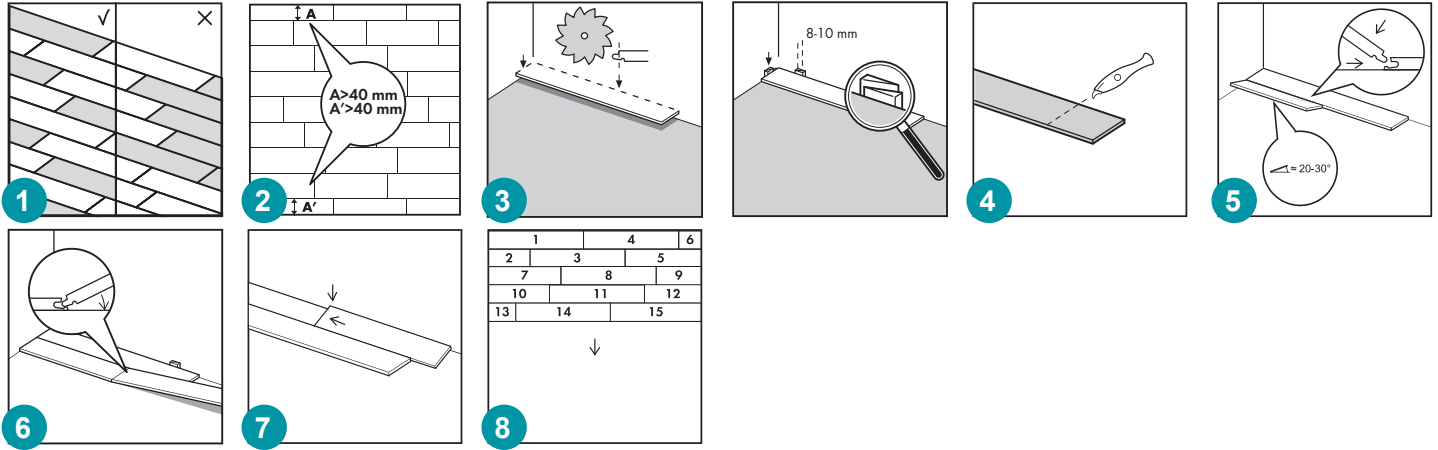
PREPARATION



Important Information: It is important to employ safe working practices when cutting or fitting floor coverings. Protective eyewear and safe footwear (steel capped preferably) should be worn throughout the installation to help prevent against injury. Dust extraction and respiratory protection (appropriate dust masks) should be used when cutting flooring or trims using a saw of any type. Materials Safety Data Sheets are available by contacting your local Premium Floors or Floorscape branch. If using ancillary products like levelling compounds etc, it is recommended to adhere to the specific safety requirements as stated by the manufacturer of the product.

1. Acclimatisation - It is recommended to bring the packs to room temperature prior to installation, by storing the packs in the rooms to be installed, as this will limit movement of the panels after installation, particularly packs that have been stored in cold or hot locations prior to installation. Packs should be left in the installation room(s) for up to 24 hours between 18-25°C prior to installation, so that they can acclimatize to their new environment.
2. Existing floor coverings - It is important to remove any soft flooring (carpet, needle felt etc.) before installation. Hybrid flooring can be installed over most existing hard floor coverings including PVC, linoleum and ceramic tiles, providing they are well adhered to the subfloor. If installing Hybrid Flooring over existing floorcoverings, the subfloor on which the existing flooring is installed needs to be dry (as prescribed in point 3 & 4 below) and level. Level tolerances should not exceed 2mm over 1 lineal metre when tested under a 2 metre straight edge in any direction and not exceed 1mm over a length of 20 cm. Grout lines wider than 3mm and deeper than 2mm should be filled.
3. Wooden subfloors – Hybrid flooring can be installed over timber subfloors made of plywood, floorboards or chipboard etc, providing;
 - a. No signs of mold and/or insect infestations are present.
 - b. The timber subfloor is level and any loose sheets or boards are securely nailed or screwed down. Unevenness greater than 2mm over 1 lineal metre when tested under a 2mt straight edge in any direction or more than 1mm over a length of 20 cm should be sanded, leveled or sheeted with a suitable wood-based underlay to render them flat and stable.
 - c. The crawl space under the sub-floor must be sufficiently ventilated. Remove any obstacles and make sure there is sufficient “cross flow” ventilation.
 - d. The moisture content of the wood must not exceed 12%.
4. Concrete Subfloors - Hybrid flooring can be installed over concrete subfloors providing;
 - a. Level - unevenness greater than 2mm over 1 lineal metre measured under a 2 metre straightedge or more than 1mm over a length of 20 cm should be ground flat or levelled using a quality cementitious levelling compound like Ardex K15
5. Heated Subfloors - Additional instructions apply if there is underfloor heating or cooling. Your dealer or installer of the floor heating system must guarantee that the floor surface temperature never exceeds 28°C. Only in-slab heating systems are suitable, always install a 200um plastic barrier before installing, and bring up temperature 5°C per day after installation of the heating system.
6. The moisture content of any concrete sub-floor must be less than 80%rh when tested in accordance with AS1884-2021. If you do not have the ability to accurately test the moisture content, or if the content is above 80%rh, a continuous damp-proof should be installed. The easiest way to install this damp-proof is by the installation of a PE plastic film of 150um thickness or greater. Joints should be overlapped 300mm and taped. Other types of ‘coat on’ damp proofs can be used, as long as they are compatible with the moisture content of your sub-floor. Wood sub-floors must be below 14%MC, otherwise a separate damp-proof should again be installed. Failure to follow the procedure regarding sub-floor moisture, can lead to a floor failure.
7. Tools - To install your Hybrid floor, you need the following standard tools: hammer, jigsaw, pencil, tape measure, safety goggles and gloves. A drop saw will also assist the speed of installation. You will also need a Uniclic Installation Kit and recommended maintenance products (both available from your place of purchase). Always use the recommended accessories and maintenance products for best results.

INSTALLATION



Hybrid flooring planks click together as they are profiled on all four sides using the Uniclic® joining system, over a properly prepared subfloor; they are not fixed to the subfloor. Because hybrid planks expand or shrink with temperature change, it is necessary to leave a gap around the entire perimeter. It is important to acclimatise and install the flooring at the approximate service temperature (18-25°C) to prevent excessive growth or shrinkage during periods of high and low temperature. Most open plan areas can be installed without need for control joints, however it is a good idea to install control joints using matching connector profiles at doorways to allow large sections of flooring to expand or contract freely. This is called “compartmentalisation”. A perimeter gap of 10 mm is recommended, this will be covered with skirting, scotia or other special profiles available from your place of purchase. Be aware that if the flooring is installed at a higher temperature, it is likely to contract during cold periods, as such a cover by scotia or skirtings of 5-8 mm will be required. Similarly, when installed at low temperature, the floor is likely to expand during hot periods, as such a full gap of 10 mm will be required. In general, continuous runs of flooring should not exceed 15 lineal metres in any direction in a residential home. However, continuous runs may well exceed this in areas subject to continuous temperature control (eg office space).

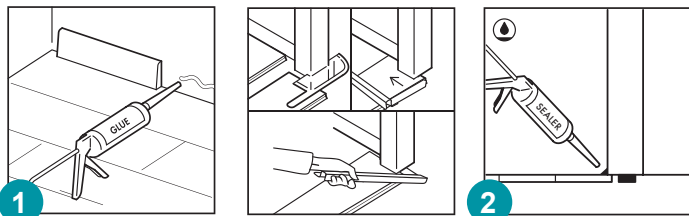
With the Uniclic® joining system you can choose where you want to begin the installation. Think about the easiest way to install the floor or simply start from the longest wall in the installation area. We will demonstrate the installation for right-handed people, from left to right. You can work in the other direction if you choose. Uniclic® is unique offering the ability to install the planks in two different ways:

Method A: Position the panel to be installed at an angle of 20 to 30° to the panel already installed. Move the panel gently up and down and at the same time exert forward pressure. The panels will automatically click into place. You can either insert the tongue into the groove, or the groove on to the tongue. The tongue in groove method is the most common and easiest way. If boards need to be tapped together to engage the joining system, use the Uniclic® Tapping Block from your installation kit.

Method B: With Uniclic® you can also tap the panels into each other without lifting. For this method, again you must use the special Uniclic® Tapping Block. The planks should not be joined with a single tap. To avoid damaging the panels you must tap them together gradually.

1. Make sure the panels are mixed sufficiently when you install them, so that you do not end up with too many identical, light or dark panels next to each other. To obtain the best visual effect, it is best to fit the floorboards in the direction of the longest wall and parallel to the incidence of light. Before starting, carefully measure the length and the width of the room to plan a precise layout to achieve a balanced appearance of the floor. This will also ensure that you won't end up with the last row being too narrow. If the last row would be less than 40 mm, the installation will be easier if you cut down the planks of the first row in the length.
2. Begin the first row with a whole plank. First saw off the tongue on both the long and the short sides.
3. Put the plank with sawn off sides against the wall. Put spacers from the installation kit between the planks and the wall. This will ensure that your expansion gap is maintained at a minimum 10mm.
4. Of course, we also need to saw the panels. To obtain a clean cut, the pattern side should face down when you use a jigsaw. Ensure that the end joints of the panels in two successive rows are never in line. Always ensure that the end joints are staggered by at least 30 cm.
5. Position the panel to be installed at an angle of 20 to 30° to the panel already installed. Move the panel gently up and down and at the same time exert forward pressure. The panels will automatically click into place.
6. With Uniclic® you can also tap the panels into each other without lifting. For this method you must use the special Uniclic® tapping block. The planks should not be joined with a single tap. To avoid damaging the panels you must tap them together gradually.
7. In places where it is too difficult to install the Uniclic® planks with the tapping block (e.g. against the wall), you can tap them together using the pulling iron and a hammer.
8. Once enough rows are installed, it is easy to continue the installation as follows: Put an unopened pack of panels on the already installed rows. Switch your position and click the short side of the panel in the previous panel.
9. Now place your BOTH hands close to the joint and pull the long side of the plank towards you. The panels will now click together.
10. Continue like this to the end of the room.
11. Remember that Hybrid flooring expands when heated and contracts when cooled. As such a gap is left around the entire perimeter and between the floor and any vertical object. It is also a good idea to install a control joint at any doorways to allow the panels to expand and contract freely, without affecting the adjoining area, this is called 'compartmentalisation'.
12. Remove all spacers.

FINISHING

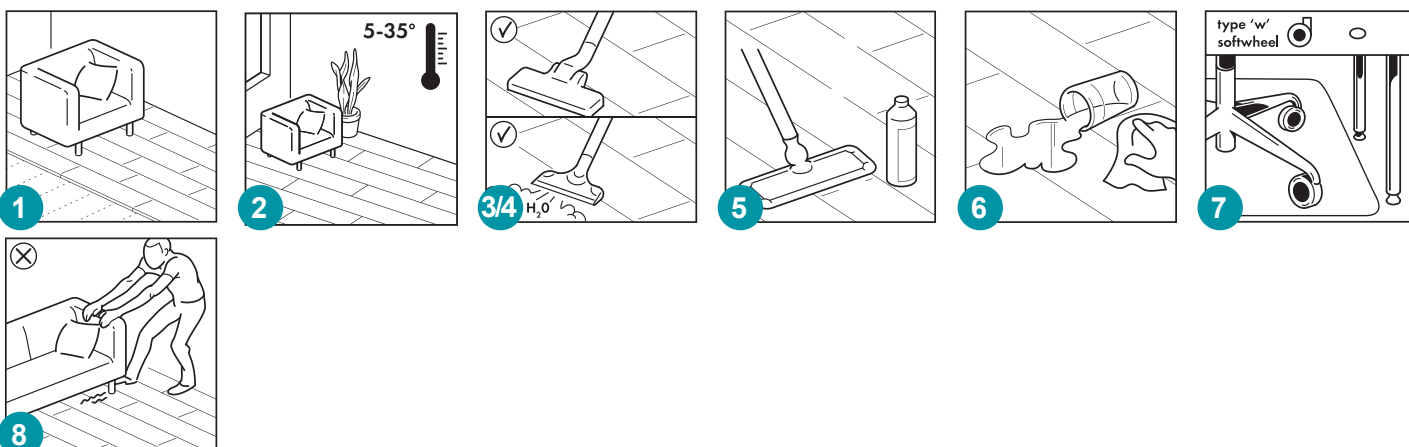


If skirting is to be used to cover the expansion gap, install the skirting boards when the flooring is completely installed. If scotia is to be used, install the scotia by fixing (pinning or gluing) it to the wall or existing skirting board. Never fix skirting boards or scotia to the floor in any way as it will restrict the free movement (expansion and contraction) of the finished floor. In the instance that scotia or skirting cannot be installed (around steel door frames for example) use a non-hardening caulking compound with a compressive capability of greater than 50%.

FINISHING IN ROOMS LIKE BATHROOMS, KITCHENS, LAUNDRY ROOMS AND ENTRANCE AREAS

1. We recommend the sealing of the floor perimeter in bathrooms, laundries or other areas prone to have excessive amounts of water on the floor. This is to prevent water flowing in and under the floor at the perimeter. Sealing of the perimeter in such wet areas can be completed with a soft silicon.

IMPORTANT TIPS



1. You can walk on your new Hybrid flooring during or immediately after installation.
2. Ensure that temperature in the installation rooms is always above 5°C and below 35°C.
3. For dry maintenance, we advise a soft broom or vacuum cleaner. Make sure the vacuum cleaner is equipped with soft wheels and use bristles down to avoid scratches on your new floor.
4. It is important to understand that steam mops or wet mops are not recommended for any hard surface floor covering. Steam cleaners and wet mops however are permitted on Hybrid flooring. If using a steam cleaner, please ensure that a cloth covers the direct steam pressure on any device as this will help an even distribution of steam and heat. Keep the steam cleaner moving during cleaning and, for best results, clean the floor in the same direction as the planks have been installed.
5. For slightly damp and wet maintenance, we advise to use the recommended cleaning and maintenance kit (Quick Step Cleaning Kit). Be aware that the use of other cleaning products might damage your floor.
6. General spot cleaners are suitable for removal of most marks. Wipe up spills and stains as quickly as possible.
7. Protect furniture and chair legs and the underside of any moving furniture using felt floor protectors. Avoid bringing dirt, water and sand indoors by providing a suitable dirt-trapping mat at all external entrances. Ensure that office chairs or chairs with castor wheels are fitted with soft wheels that are suitable for hard floors and/or use a suitable vinyl protective desk mat.
8. Never drag items of furniture over the floor but lift them up, especially when moving appliances back into position.
9. The smooth surface of your Hybrid flooring will retain very little dust or dirt. Remove stubborn stains carefully with a citrus based cleaner or eucalyptus oil. Never use scouring products. Never use wax or varnish coating on the floor.

For more information, please contact:

Australia
Premium Floors Australia
Phone: (03) 9798 0808
e-mail: vicsales@premiumfloors.com.au

New Zealand
Floorscape Limited
Phone (09) 476 0428
e-mail: info@floorscape.co.nz