

IMPORTANT INFORMATION

It is strongly recommended that these instructions are read in full prior to commencing any flooring installation. Of course, if there are any questions at all or you are unsure about any aspect of the preparation, installation, finishing or maintenance of your new floor, please contact your place of purchase for clarification prior to commencement. Failure to follow these instructions may affect the performance of and/or the warranty on your new floor. If you are reading a printed version of these instructions, please know that things change from time to time and that the latest version of this document will be found at www.premiumfloors.com.au.

GENERAL INFORMATION

Clix Laminate Floors are engineered to provide a quality, robust flooring surface that's resistant to scratches, wear, staining and indentations. The patented Uniclic joining system provides for fast, easy and strong floating installations, achieved by clicking the boards into position without the need for messy adhesives.

Clix Laminate Floors can be installed atop any flat, dry and stable surface, including existing fixed hard floor coverings. An expansion gap needs to be left, during the installation of the floor, to the entire floor perimeter, allowing the floor to expand or contract (as one sheet or "raft") across the subfloor in line with seasonal variations in relative humidity. A successful installation will rely heavily on strict adherence to these installation instructions.

It is important to note that the most common causes of floor failure or client dissatisfaction are:

- installations over uneven or ill prepared subfloors
- installations that do not provide sufficient perimeter expansion
- installation of boards with an obvious visible manufactured defect

The Uniclic joining system allows for most boards to be installed without the need for a hammer and tapping block, however, some boards may need to be tapped together when fitting boards into profiles or installing around door frames. Care should be taken to ensure that the Uniclic tapping block is used when tapping boards into position.

Laminate floors should be installed in a "laminate friendly environment". This means that laminate flooring is not designed to be exposed to extremes of humidity or temperature. It is important to know that floors exposed to such conditions may fail.

Sensible protection of the flooring from such extremes, particularly in unoccupied homes, must be afforded. Measures can include: curtains, awning, blinds, window tinting, and early commissioning and/or regular use of air conditioning or humidity control devices.

Protection of the flooring from any radiant heat source should also be provided, e.g. around combustion heaters and other heat sources, as these generate extreme low humidity. Clix Laminate should not be installed until these measures are in place and is recommended to not be installed more than 2 weeks prior to occupation of the home.

It is important to understand that any warranty, expressed or implied, may be voided if the floor is exposed to extreme conditions.

HEALTH & SAFETY INFORMATION

It is essential to employ safe working practices when preparing for, cutting or fitting floor coverings. Protective eyewear, ear protection and safe footwear should be worn throughout the installation to help prevent against injury. Eye protection, dust extraction and respiratory protection should be used when cutting flooring or trims using a saw of any type.

Material Safety Data Sheets are available by contacting Premium Floors. If using ancillary products like levelling compounds etc, it is recommended to adhere to the specific safety requirements as stated by the manufacturer of the product. It is important to use all electric and non-electric tools in accordance with the manufacturers' instructions and safety guidelines.

PREPARATION

1. What you'll need to install your Clix Laminate floor

To install your laminate floor you need the following standard tools;

- Relevant safety equipment and personal protective equipment (earmuffs, safety goggles, gloves, dust mask etc)
- A Uniclic Installation Kit (available at your place of purchase)
- A hammer and a set square
- A circular/drop saw or hand saw
- A jigsaw
- A pencil, tape measure, a sharp knife
- Any floor preparation materials you might need to level or prepare your subfloor

Apart from that, you will of course need your Clix Laminate flooring, enough approved underlay, trims and profiles to finish the edges of your floor and a Maintenance Kit to ensure your floor looks it's best after you've finished the installation.

Underlay is essential for all laminate installations. Ensure that your supplied underlay is a recommended underlay of SD > 75m. The recommended underlay for Clix Laminate Floors is Quick-Step Combi-Lay or Quiet Step Combi-Lay, as results or performance cannot be guaranteed on any other underlays. If you have any questions, please consult your place of purchase.

It is important to note that the Clix accessories have been specifically designed to provide optimal results for your floor and that using other products may cause damage to your floor. In such cases the relevant guarantee provided will be voided. We therefore advise to use only approved accessories with Clix Laminate Floors.

2. Installation preparation

If storing packs on site, ensure they are stacked on pallets or similar, to keep them off the subfloor until installation.

Remove all existing carpet or soft flooring and underlays. Clix Laminate can be installed directly atop most existing fixed hard flooring but only when the existing flooring is well stuck and meets the criteria outlined in the following sections.

All subfloors need to be;

1. Sound and structurally stable enough to be installed atop. Any loose parts of the subfloor or hard flooring need to be secured, repaired or removed and replaced.
2. **Flat with no unevenness greater than 2mm over the length of 1 metre in any direction.** This should be measured using a 1 metre long straightedge and no part of the subfloor surface should deviate more than 2mm from the underside (middle) of the straightedge.
3. Clean and free of old adhesives, building rubble etc prior to installation.

Concrete subfloors need to be;

1. Dry enough to install atop. **The moisture content of any concrete sub-floor must be less than 80%RH (relative humidity) when tested in accordance with AS1884:2021.** In the instance that a subfloor is suspected to be or knowingly wet (insufficiently dry), it is always best to remedy the cause of the excessive moisture first. If this is not possible, we recommend installing an additional 200uM builders plastic to provide a cost effective moisture vapour barrier. If installing plastic sheeting, ensure to install the plastic sheeting up all vertical surfaces to create a "well" and remember to overlap all joins by 300mm and tape all joins using a vapour-tight tape.

Timber subfloors need to be;

1. Dry enough to install atop. **Timber floors can be tested using a pin probe style, penetrative electrical resistance meter with a reading lower than 14% deemed dry.** In the instance that a subfloor is suspected to be or knowingly wet (insufficiently dry), it is imperative to remedy the cause of the excessive moisture prior to installation. Do not use a builders plastic over a timber subfloor.
2. It is important that timber subfloors have sufficient cross flow ventilation in the crawl space under the subfloor with unblocked vents on all four sides of the building. Inspection of the crawl space is recommended prior to installation with damp smells or puddles of water in any area to be considered red flags that require further investigation. In some circumstances a sub-floor ventilation system may be required.

3. Check the delivered goods

Packs should be checked on arrival to site to ensure that they are the correct product and colour and that they are free of damage. Damage to any packs should be reported to your place of purchase immediately.

If storing packs on site for longer than 12 hours they should be stored flat and off the ground in a dry, well ventilated and safe place. The underlay delivered should also be checked on arrival.

It is recommended that you know how the trims and profiles to be installed with your flooring are installed as some profile bases must be installed prior to installing your floor. If you are in doubt, again please contact your place of purchase prior to installation. **Always install flooring in well-lit areas/conditions to ensure boards with obvious visible manufactured defects are not installed.**

4. Selecting the installation direction

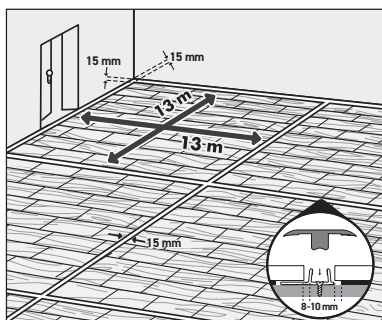
Clix Laminate Floors will look and generally perform better when installed along the length of an installation area. Another consideration is the direction of natural light, with installations looking better parallel to the source of incoming light.

5. Compartmentalisation

In large or multi-room installations, you will need to install trims at door thresholds or throughout the installation area. This is known as compartmentalisation.

Check with your place of purchase prior to installation whether the area to be installed needs to be compartmentalised and for more information on the recommended location of in-floor trims. In general, the minimum perimeter gap is 10mm, however larger floors, or areas of high humidity may require larger perimeter gaps.

Always use expansion joints to prevent runs exceeding 13 lineal metres in any direction. Plasterboard and skirting can be undercut to allow for extra expansion as needed.



6. Finally...

- Check that the doors can still open and close after the floor and underlay have been installed.
- Kitchen island benches and cabinets or any heavy fixtures should be installed prior to the installation of flooring and should not be installed atop laminate flooring. The floor must be able to move freely around any heavy objects to avoid bubbling of the floor, open joints, peaking edges, and separating planks.
- Laminate Flooring should not be installed externally or in areas that cannot reasonably be protected from the extreme temperatures or conditions. Sauna's, sunrooms, commercial kitchens etc are considered unsuitable for laminate flooring.
- Any questions prior to or during the installation process should be directed to your place of purchase. It is always better to seek advice before continuing with installation of flooring.

INSTALLATION

Clix Plus and Clix XL Laminate Ranges are made with hydro-seal technology in order to provide a highly water resistant surface. It is important to note that terms and conditions do apply to these warranties and should be read prior to purchase and installation.

Despite their waterproof surface, these floors do not comply with the damp proofing requirements for wet areas. As always, damp proofing in accordance with the local standard should be completed prior to installation. It is however important to know that these boards are not suitable for use in damp spaces like pool areas, saunas and rooms with built-in drains like showers.

With Uniclic® boards you can choose where you want to begin.... Just think about the easiest way to install the floor. We will demonstrate the installation for right-handed people, from left to right. You can work in the other direction if you like.

1. Mix the boards

Make sure the boards are mixed sufficiently when you install them, so that you do not end up with too many identical, light or dark boards next to each other. To obtain the best visual effect, it is best to fit the floorboards in the direction of the longest wall and parallel to the incidence of light.

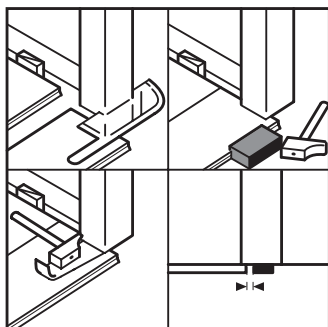
2. Planning ahead

It is more difficult to finish along walls using thin "slivers" of flooring as the final row and it looks better to avoid thin slivers on one side of a hallway. This said, measuring to see where boards will sit in the installation prior to installation can balance the floor aesthetically. Whilst this is not always possible or practical, it is best done prior to installation.

3. Skirting on or skirting off

During the installation, an expansion gap will be left at the entire perimeter of the floor and where the flooring meets vertical finishes (skirting boards, walls, kitchen cabinets & kickboards, pipes etc). This gap will need to be covered after the installation has been completed. If skirtings have not been fitted, skirting boards usually cover this gap well for most installations.

If you already have skirting boards and don't want to remove and re-fit them, scotia profiles in matching colours are readily available from your Clix Retailer. Undercutting skirting is also a viable alternative as long as a uniform expansion gap can be achieved without the use of spacers.

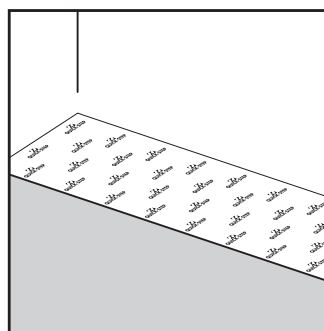


4. Undercut door frames and fit profile bases

Before you start, it is easier to undercut any door frames using an undercutter, multitool or a flexible blade hand saw and an offset of flooring and underlay.

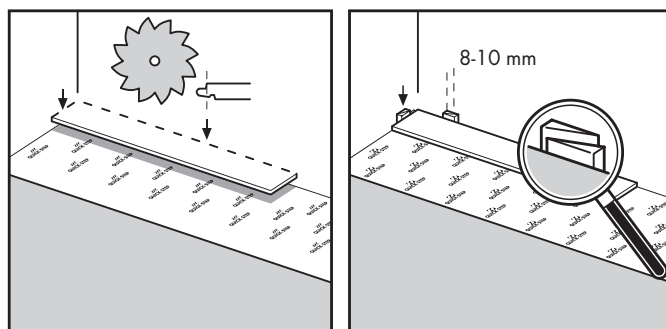
Floorboards should be installed no further than 4mm under the doorframe, this will allow the boards to expand freely. In most instances, the base of trims or profiles to be installed are best installed prior to installing the flooring itself.

5. Install the underlay



Underlay is essential for all laminate installations.

The specially designed Quick-Step underlays feature damp proof, insulating and noise reducing properties as well as the ability to take up minor subfloor variations. The smooth top surface makes installing the laminate boards easier and allows the floors' expansion afterwards. They provide excellent protection from sub-floor moisture with an SD >75m. You can find more information about Quick-Step underlays and how to install them from your Clix Retailer.

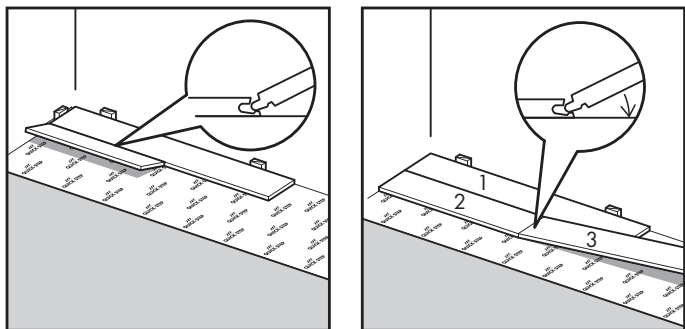


Roll out your Quick-Step Underlay one roll at a time in the same direction as the planned direction of the laminate floor boards. As subsequent rolls are installed, ensure the joins are taped using the underlays' integrated peel and stick tape. Any holes, tears or joins in underlay should be taped well using a vapour-tight tape.

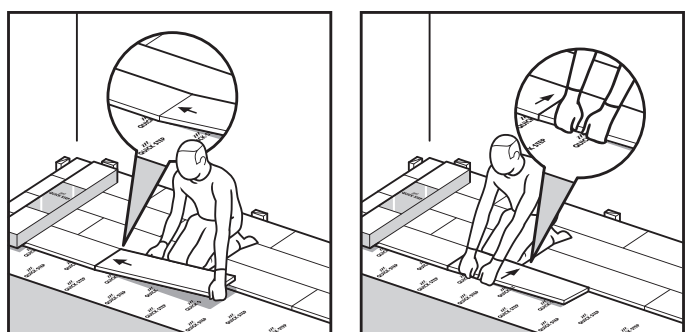
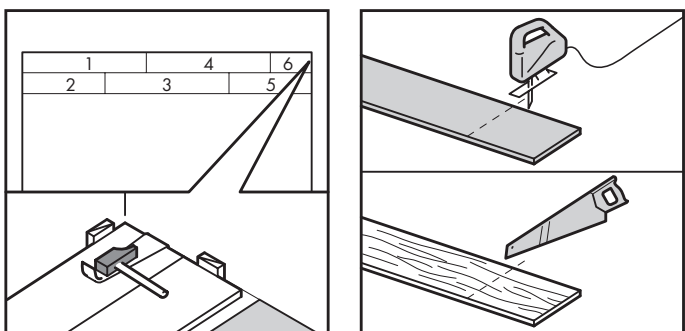
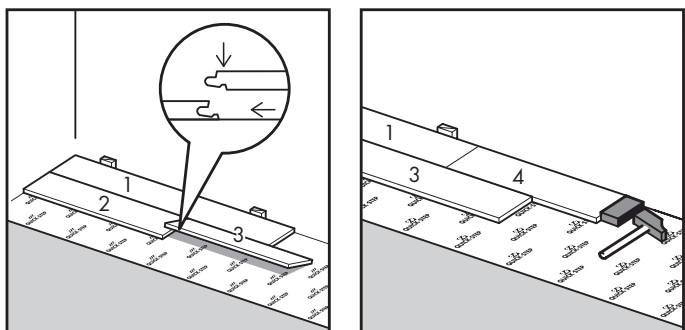
6. Install the first and consecutive rows

Begin the first row with a whole plank. First saw off the tongue on both the long and the short sides. Then fit to the corner of the room using spacers from your Uniclic Installation Kit.

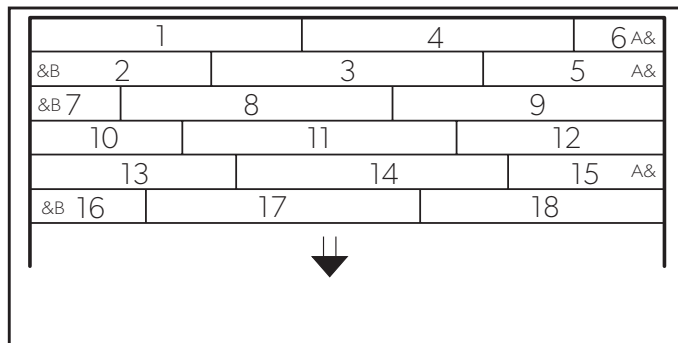
In smaller areas and cooler, lower humidity climates, an expansion gap of 10-12mm is recommended. In areas of higher humidity (North Queensland, Bay of Islands, Northland, Waikato etc) a gap of 14-16mm should be left to the perimeter. **Remember that large installation or multi-room installations will often require compartmentalisation (refer Preparation section 5).**



Continue now installing the first board in the second row, ensuring that the end (or short) joins of any consecutive rows are at least 300mm apart to create a random staggered appearance and reduce wastage. Continue to install the boards as shown in the pictograms below and remembering to maintain the expansion gap using the spacers. After the first few rows are installed, use the offcut from the last row installed to start the next row.



HINT: To obtain a clean cut, use a fine teeth, scroll cut blade when using a jigsaw or circular saw. The use of saw blades that have a higher amount of cutting teeth is also recommended to achieve a neat cut.



To install a board using the rotation method, position the board to be installed at an angle of 20 to 30° to the board already installed and sit the tongue of the board in your hand inside the groove of the board on the floor. Move the board gently up and down and at the same time exert forward pressure. The boards will automatically click into place as the board being installed is pushed into the existing board and down.

With Uniclic® you can also tap the boards into each other without lifting or rotating (great for installing boards in tight spaces or under door frames etc). For this method you must use the special Uniclic® tapping block. **The planks should not be joined with a single hit. To avoid damaging the boards you must tap them together gradually.** If a board is not clicking into place properly after a few attempts, check the joining system for any damage or debris.

Once you have installed your last board, you should remove all spacers, sweep/clean the floor and complete installation of your trims and profiles.

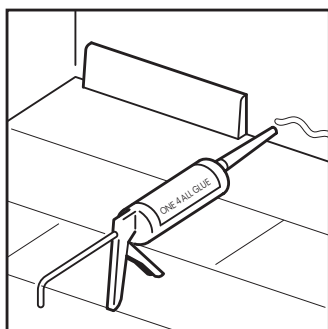
FOR CLIX XL PLEASE NOTE:

The easiest way to connect Clix XL planks is by a rotating fold down movement. Lift the connecting plank up in an angle of 20-30 degrees, push it into the long side groove and slide it gently to the left until the plank ends meets. Push the plank firmly downwards to the floor, and this will lock the joint perfectly in the end.

In places where it is too difficult to install the Uniclic® planks with the tapping block (e.g. against the wall), you can tap them together using the pulling iron or unifix tool and a hammer.

Once enough rows are installed, it is easy to continue the installation as follows: Put an unopened pack of boards on the already installed rows. Switch your position and click the short side of the board in the previous board. Now place your BOTH hands close to the joint as shown in the figure and pull the long side of the plank towards you. The boards will now click together. Continue like this to the end of the room.

FINISHING



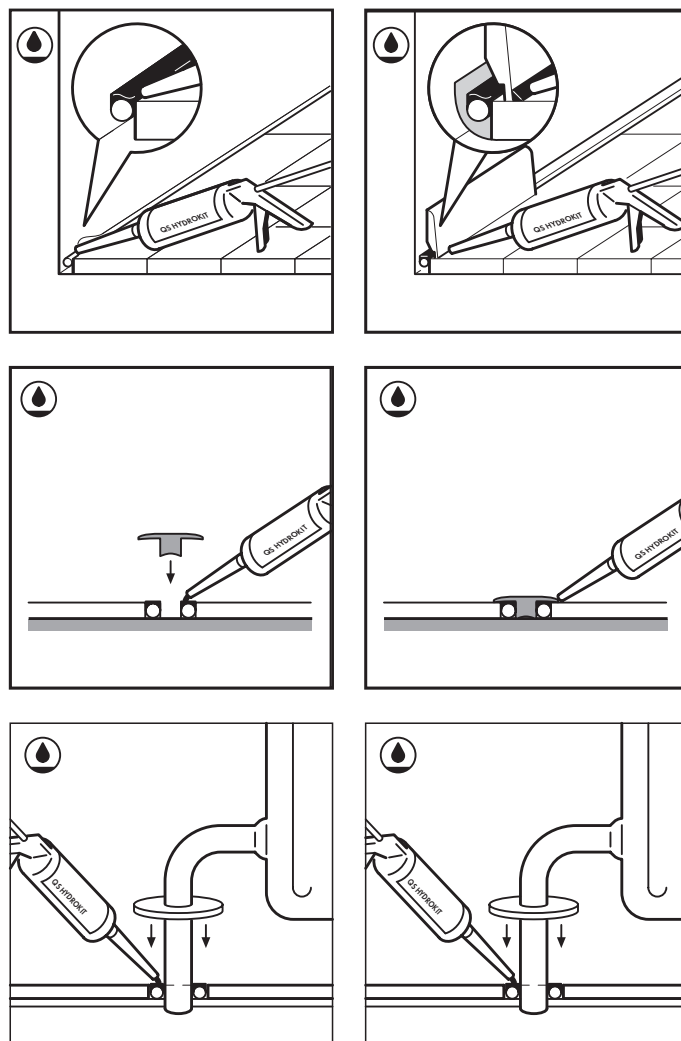
Fix skirting boards or scotia using quality construction adhesive and/or brads or small diameter nails. It is important to never attach or glue the skirting board or scotia trims to the floor. This method allows the floor to expand and contract under the profile.

In places where profiles, skirting-boards or scotias cannot be placed (around steel door frames etc), a fit to purpose profile or trim should be used to cover the expansion gap. If this is not possible, a foam rod can be used inside the expansion gap, and the top sealed with Quick-Step hydrokit flexible silicone. **Expansion gaps must NEVER be filled with silicone or gap filler.**

In rows where there is a pipe, make sure to leave a 10mm-14mm expansion gap around the pipe. Fill the expansion gap with a Quick-Step foam rod, and apply Quick-Step hydrokit silicone over the top for a watertight surface finish. Do not fill the expansion gap with silicone or any other filler.

NOTE: If there is a permanent fixture that requires drilling into the flooring (such as a doorstop) then expansion gap is required, follow instructions for pipes above.

FINISHING IN WET AREAS



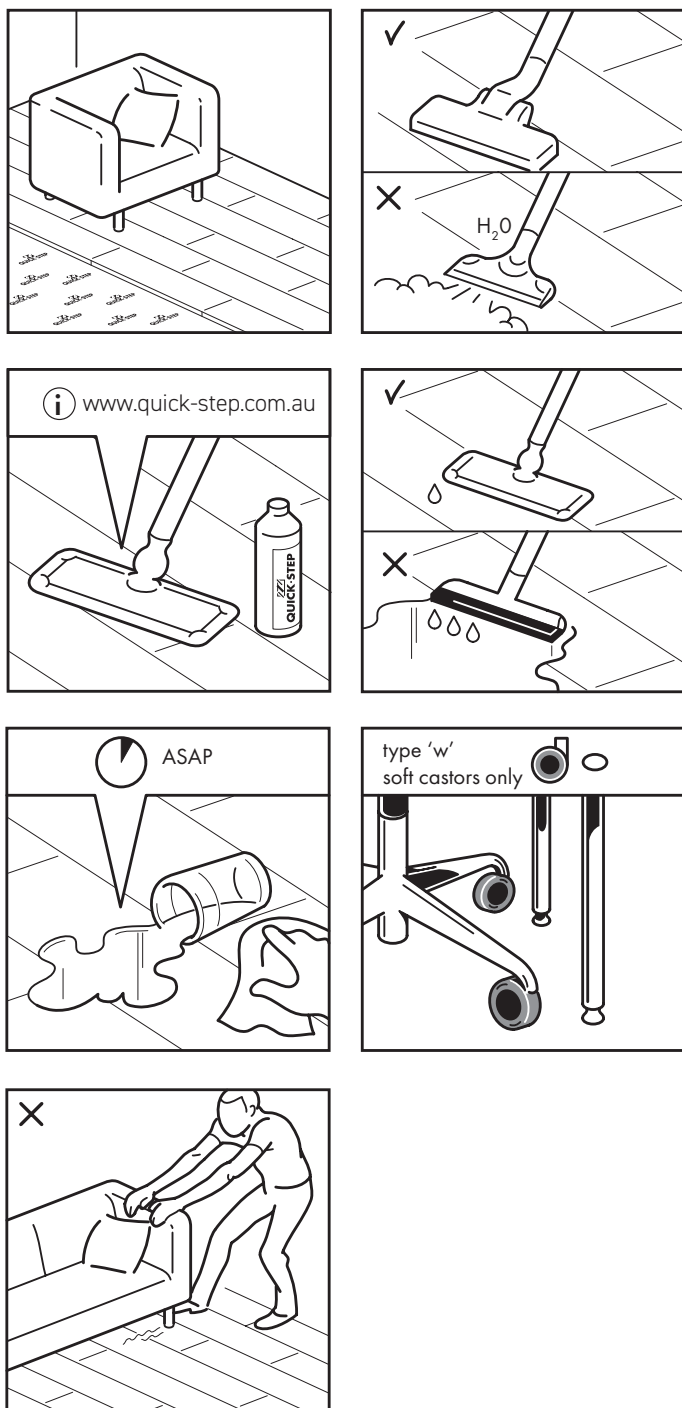
As Clix Plus and Clix XL are warranted for use in wet areas please carefully follow the instructions below to ensure a watertight finish and adherence to warranty requirements.

Please check with your local building authorities on suitability of this product in your wet area.

We recommend the sealing of the floor perimeter in bathrooms, laundries or other areas prone to have excessive amounts of water on the floor. This is to prevent water flowing in and under the floor at the perimeter.

Sealing the perimeter expansion joints combines a compressible PE foam also known as a foam rod with diameter 8 to 10mm and the flexible and waterproof Quick-Step® HydroKit. Push the PE foam in the expansion joints and apply the flexible Quick-Step® HydroKit. In addition to the floor perimeter the underside of the trim/profile and door jambs or other floor penetrations should be sealed using the hydrokit system. It is also required to separate wet areas using an Incizo trim (i.e. at bathroom or laundry door junctions).

CARE & MAINTENANCE



You can immediately walk on your new Clix Laminate Floor after installation. It is important to read through the care & maintenance instructions as following these instructions will help to keep your new floor looking better for much longer.

For daily or dry maintenance, we recommend the Quick-Step mop (used dry) or vacuum cleaner. Make sure the vacuum cleaner is equipped with soft wheels and used brush down to avoid damage to your new floor. **Use of steam mops is not permitted on any Clix laminate.**

For slightly damp maintenance, we recommend the Quick-Step Cleaning Kit (see instructions). Be aware that the use of other cleaning products might damage your floor. It is also important to know that whilst the microfiber mop head on the Quick-Step Mop is machine washable, that fabric softener must not be used in the wash cycle as this can create a difficult to remove film over your floor that can develop over time. All spills should be wiped up immediately as excess water left on the floor may permanently damage your floor, as well as causing a possible slip hazard.

Avoid bringing dirt, water, sand and grit indoors by providing a suitable colour-fast, dirt and moisture trapping floor mat at all external entrances.

Ensure that any office chairs and furniture with castor type wheels type 'w' soft castors only and/or are protected from direct contact with the floor. In the case of office chairs, a vinyl protective desk mat is also strongly recommended. Protect furniture and chair legs using high density felt floor protectors.

When moving heavy furniture back onto your floor or at any other time, ensure items are not dragged. If items are too heavy to be lifted, roll them carefully over a protective sheet to prevent floor damage.

In the case that your floor is exposed to potential stains, remove the staining agent as quickly as possible. If light rubbing with Quick-Step Cleaner is insufficient, acetone or nail polish remover can be used with a white cloth to assist stain removal. Never use scouring products! Never use wax or varnish coating on the floor.

Keeping your internal environment "laminate friendly" is important. The area should be well ventilated, occupied and protected from extreme sunlight and extreme swings of humidity and temperature. Failure to provide such an environment can lead to fading, excessive expansion / contraction (gaps) or noisy floors.

Thank you for your purchase, further information relating to installation, care and maintenance can be obtained from;

Premium Floors Australia Pty. Ltd.
www.premiumfloors.com.au